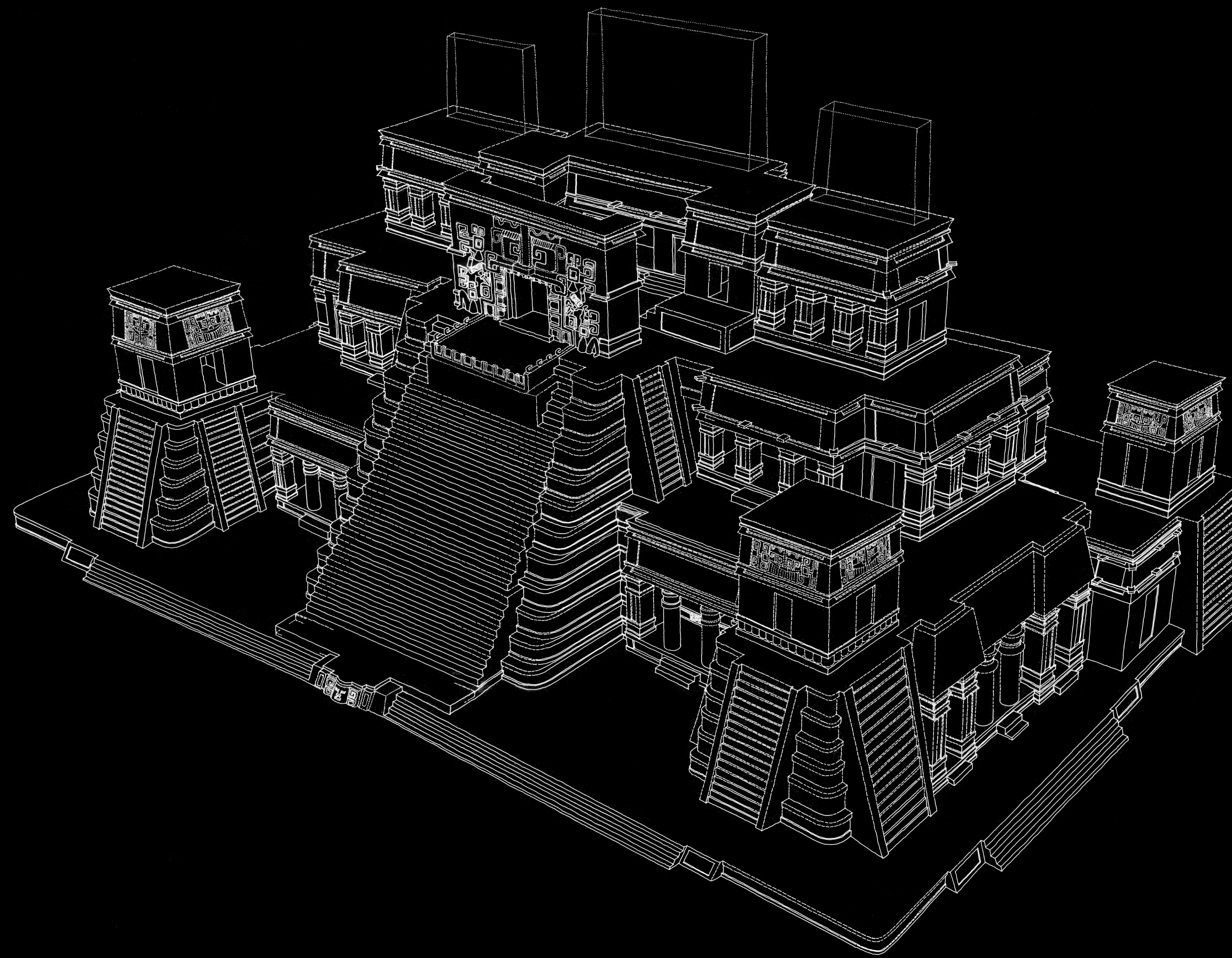


# THE MAYA TEMPLE-PALACE OF SANTA ROSA XTAMPAK, MEXICO

LARGE SIZE MAPS AND PLANS



HASSO HOHMANN

THE MAYA TEMPLE-PALACE OF SANTA ROSA XTAMPAK

©Verlag der Technischen Universität Graz 2017  
©Academic Publishers Graz 2017

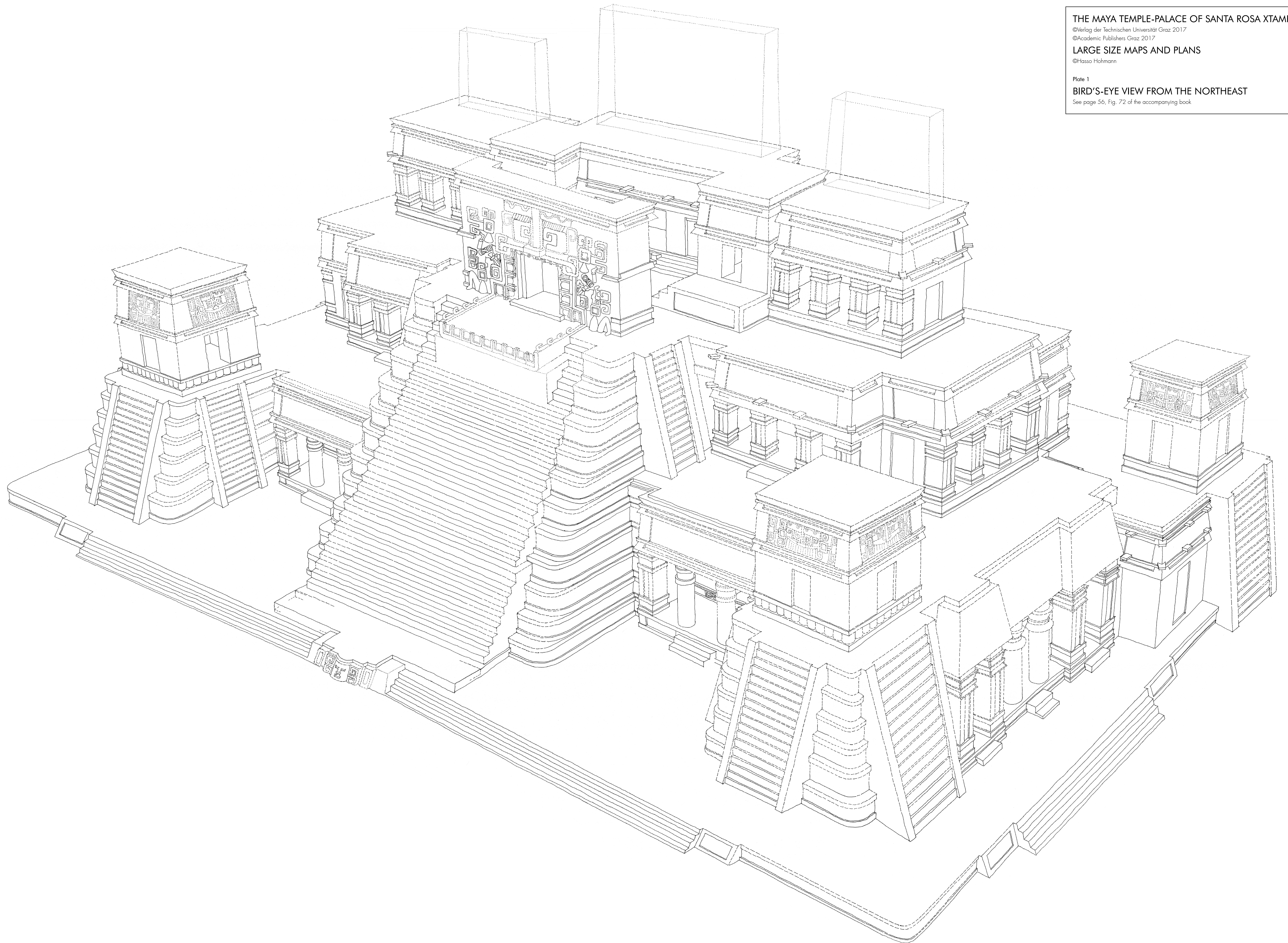
LARGE SIZE MAPS AND PLANS

©Hasso Hohmann

Plate 1

BIRD'S-EYE VIEW FROM THE NORTHEAST

See page 56, Fig. 72 of the accompanying book



THE MAYA TEMPLE-PALACE OF SANTA ROSA XTAMPAK

©Verlag der Technischen Universität Graz 2017  
©Academic Publishers Graz 2017

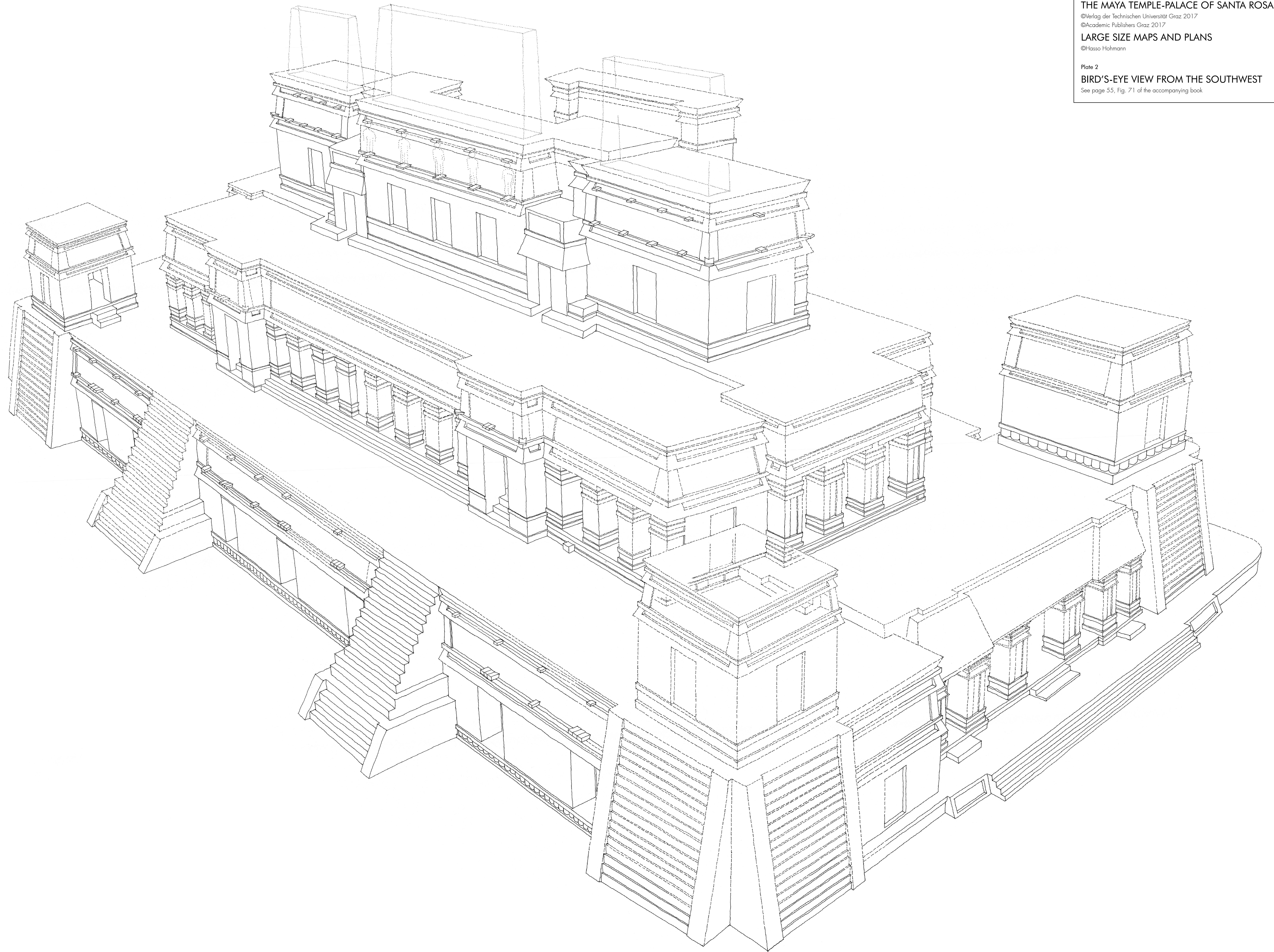
LARGE SIZE MAPS AND PLANS

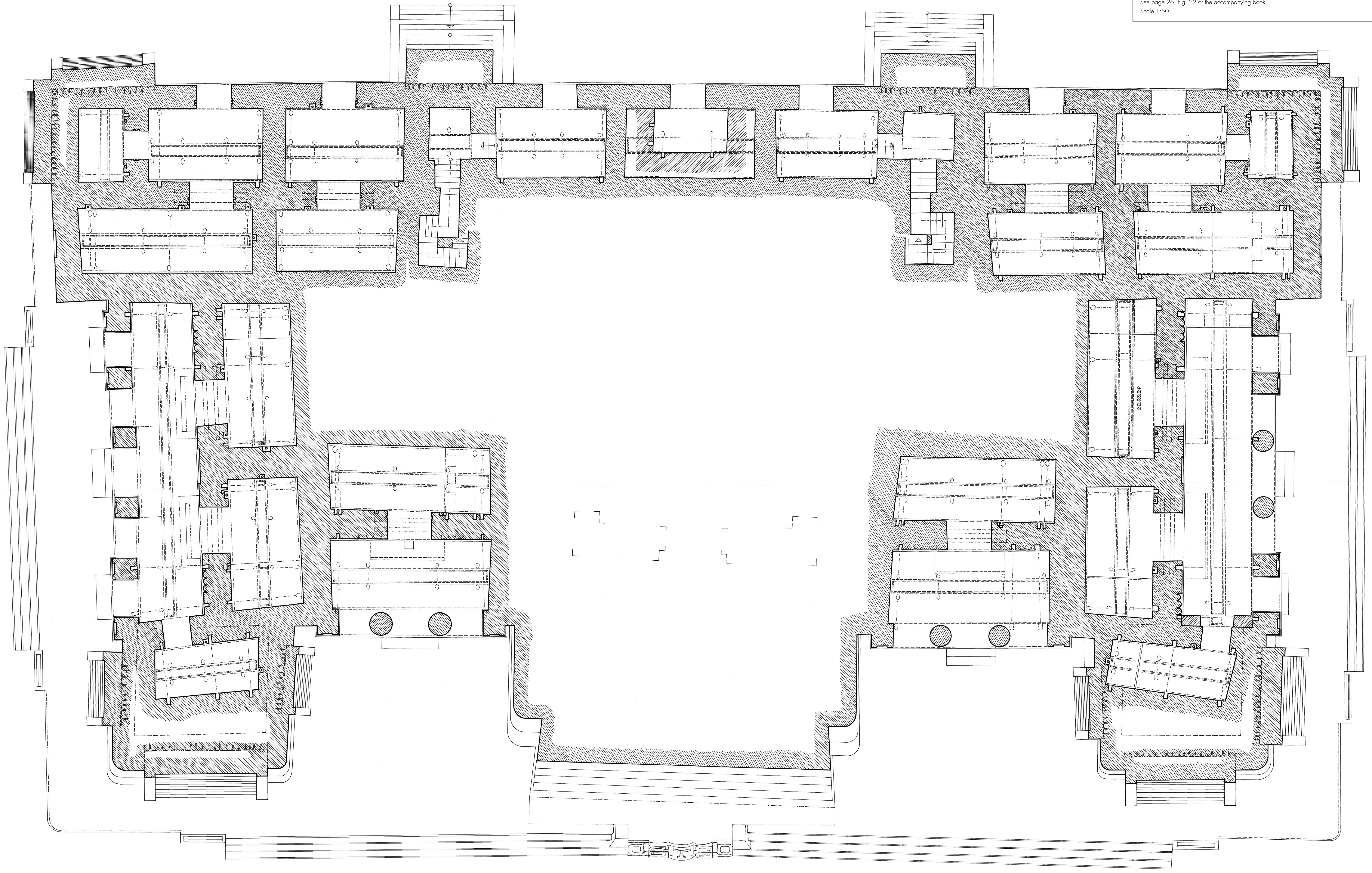
©Hasso Hohmann

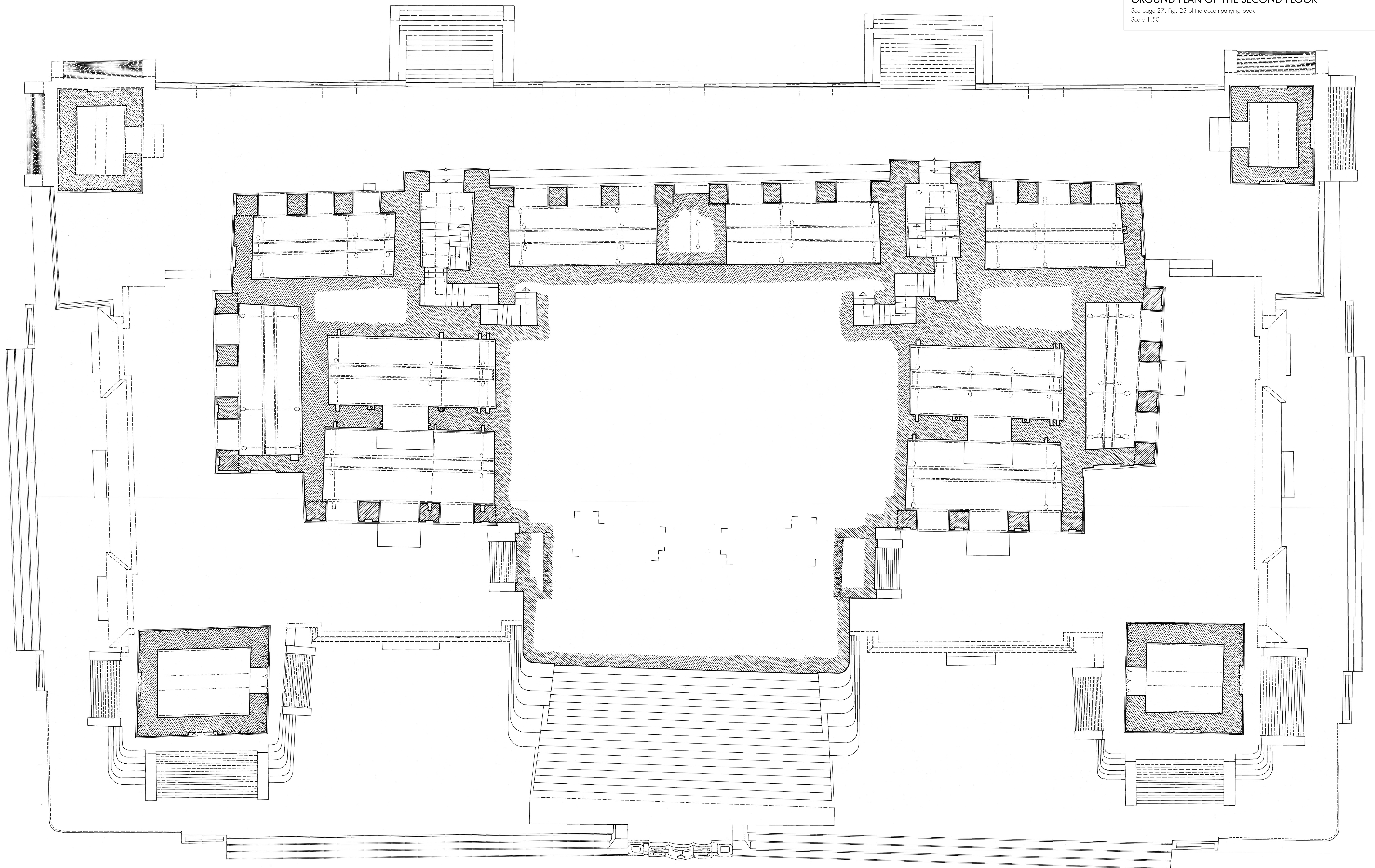
Plate 2

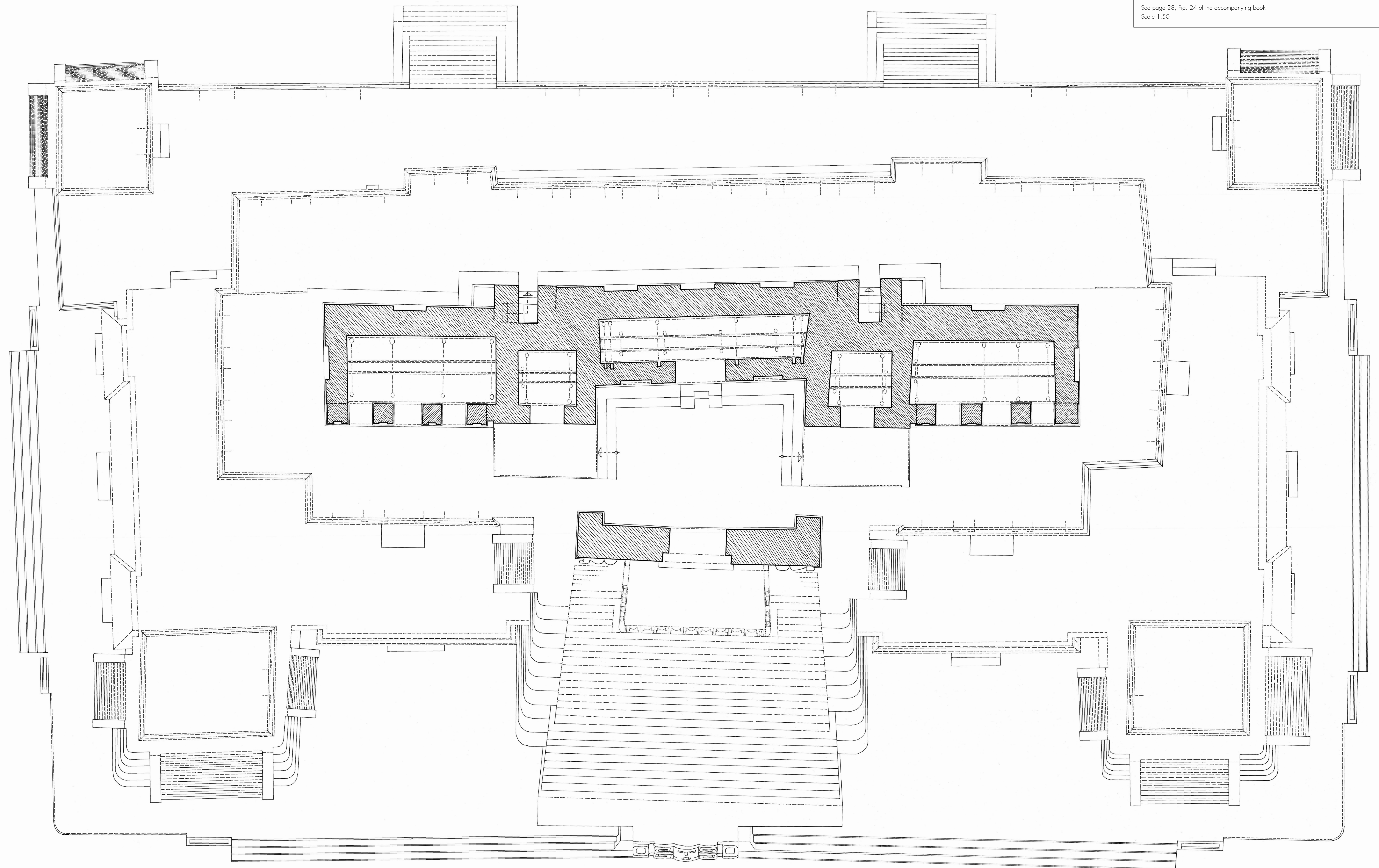
BIRD'S-EYE VIEW FROM THE SOUTHWEST

See page 55, Fig. 71 of the accompanying book









THE MAYA TEMPLE-PALACE OF SANTA ROSA XTAMPAK

©Verlag der Technischen Universität Graz 2017  
©Academic Publishers Graz 2017

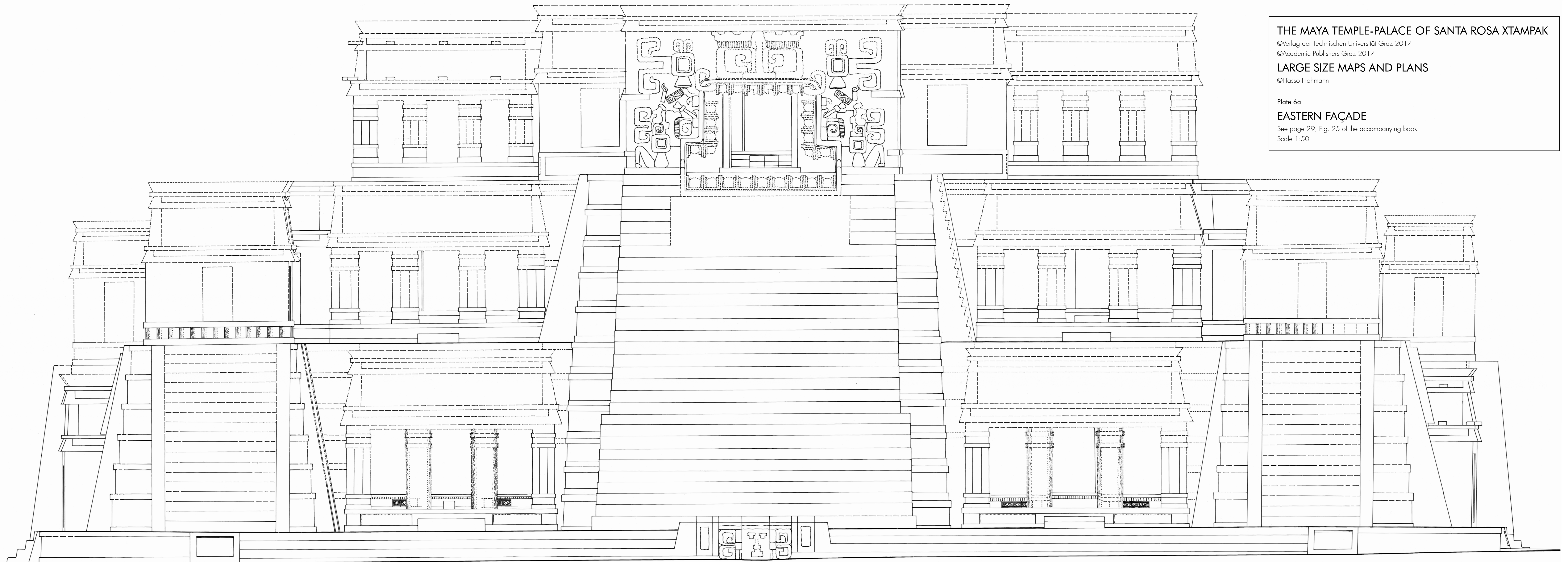
LARGE SIZE MAPS AND PLANS

©Hasso Hohmann

Plate 6a

EASTERN FAÇADE

See page 29, Fig. 25 of the accompanying book  
Scale 1:50

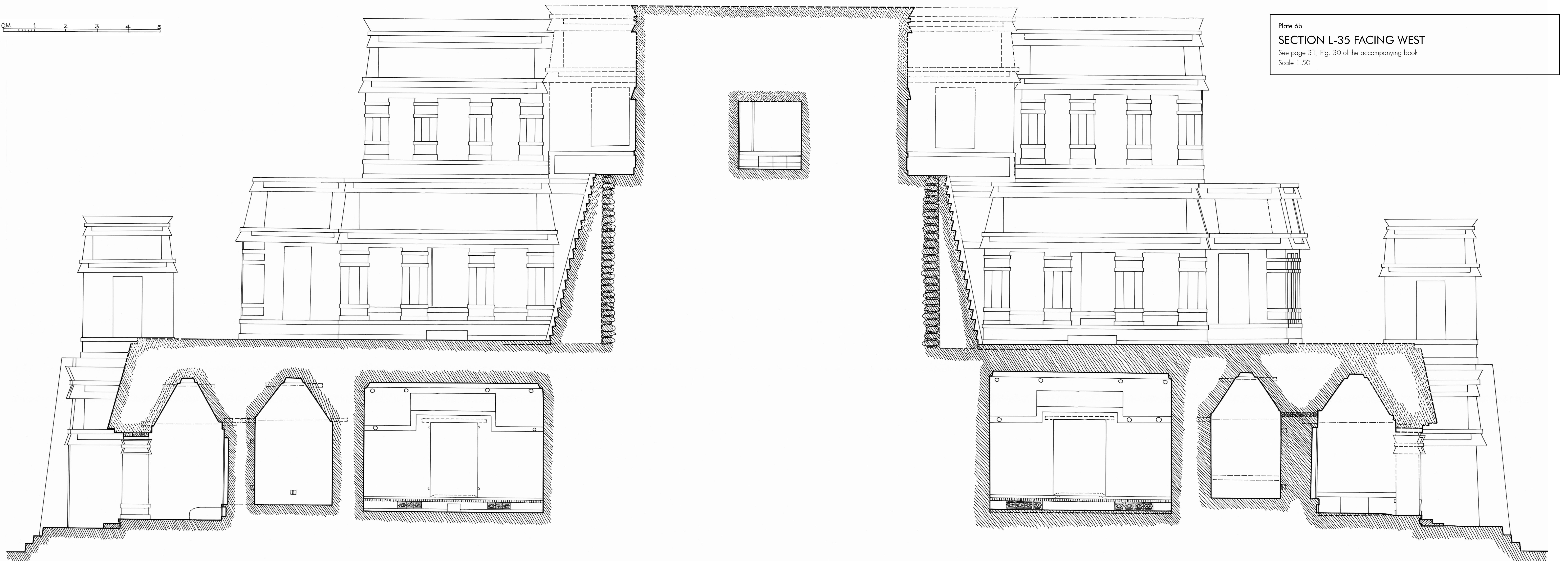


QM 1 2 3 4 5

Plate 6b

SECTION L-35 FACING WEST

See page 31, Fig. 30 of the accompanying book  
Scale 1:50



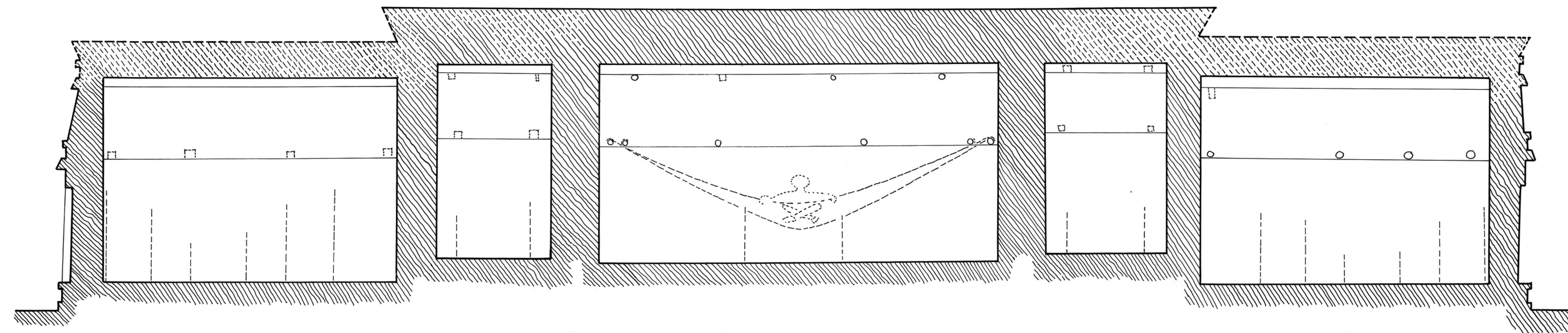
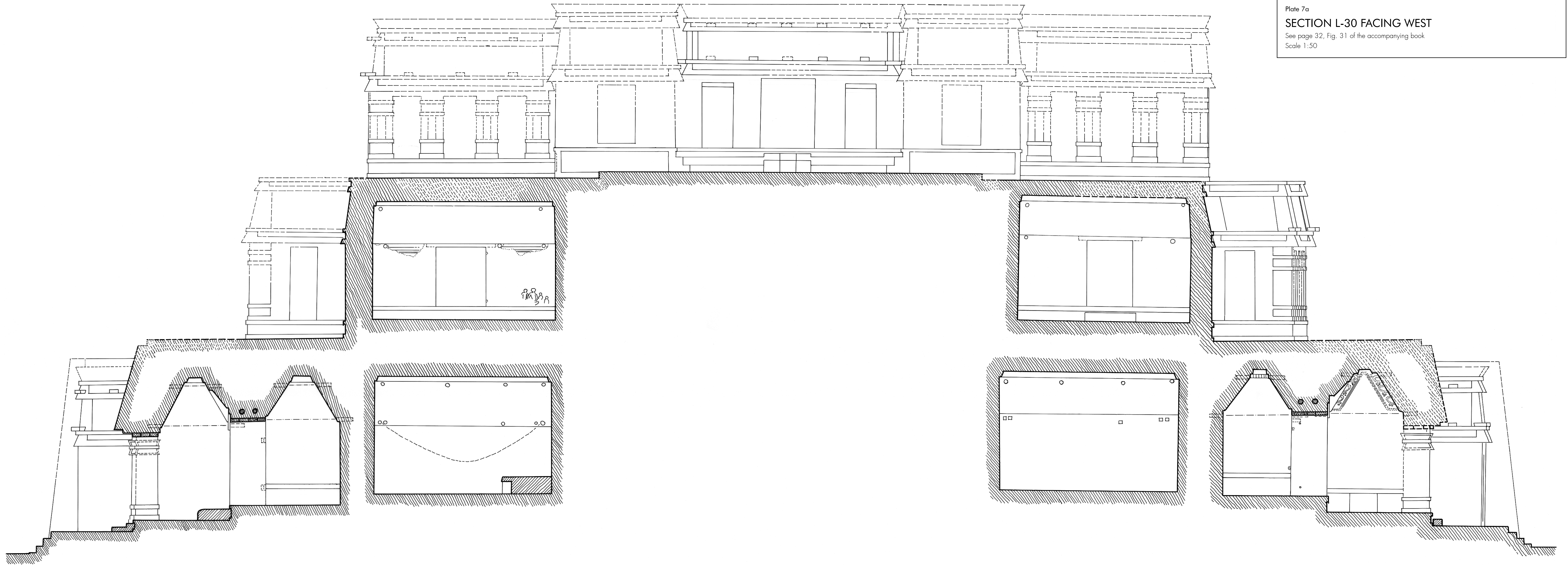




Plate 8a  
SECTION L-15 FACING WEST  
See page 34, Fig. 34 of the accompanying book  
Scale 1:50

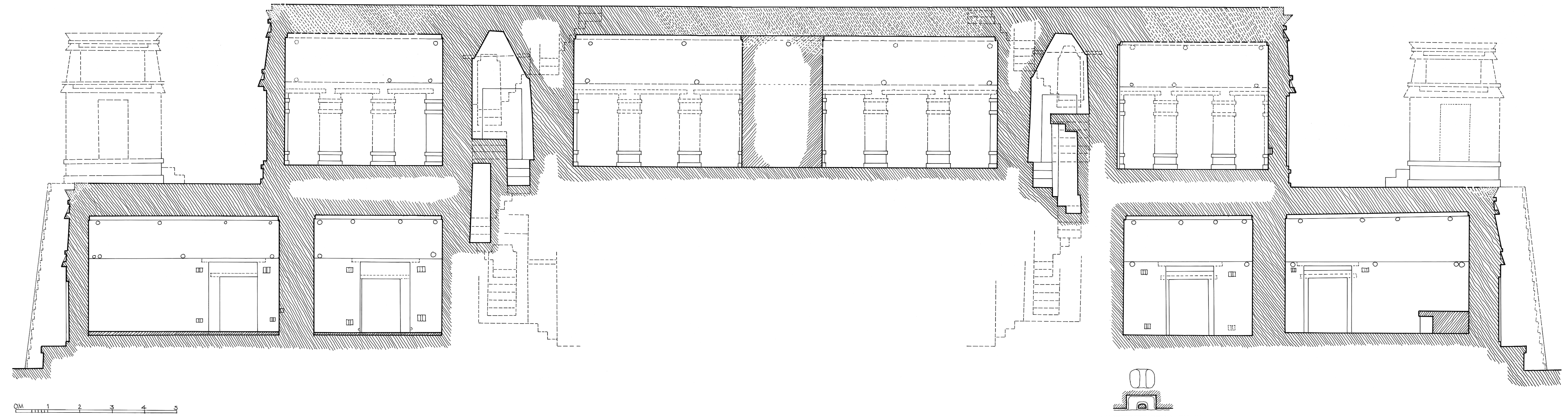


Plate 8b  
SECTION L-10 FACING WEST  
See page 34, Fig. 35 of the accompanying book  
Scale 1:50

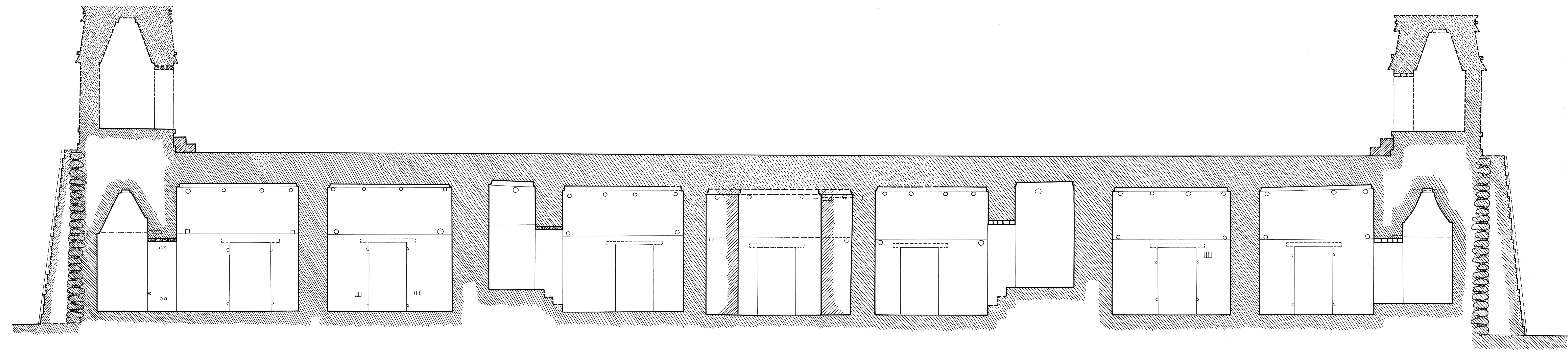
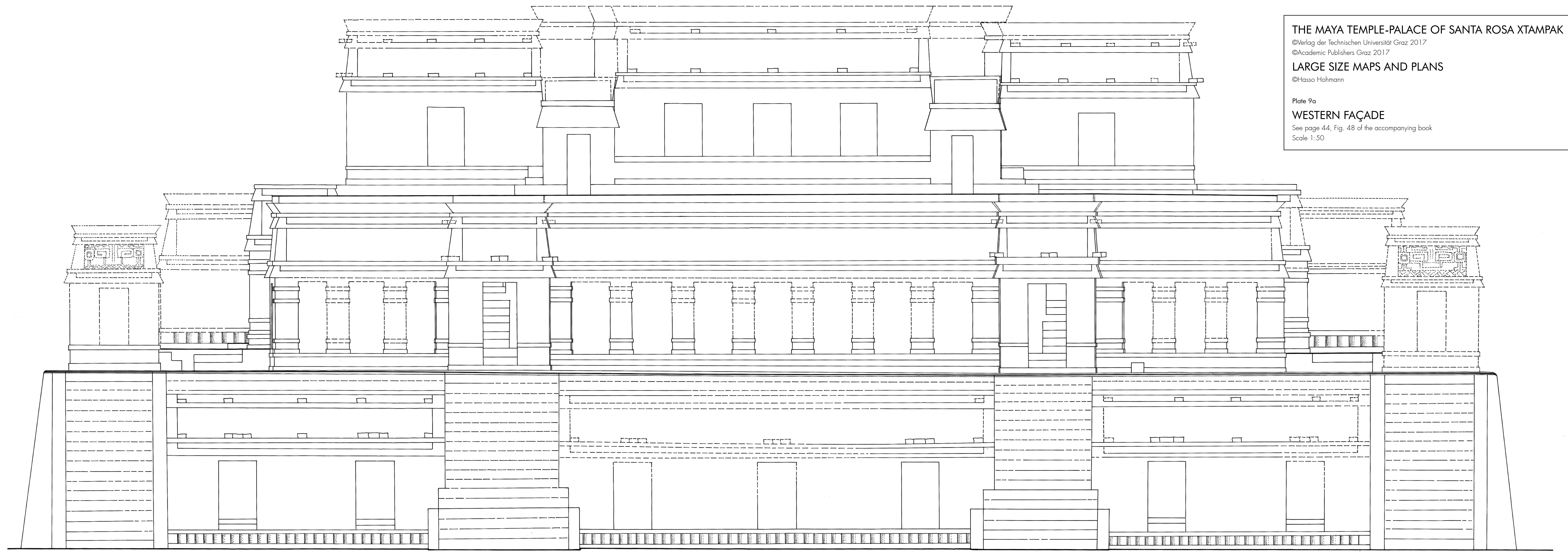


Plate 9a  
**WESTERN FAÇADE**  
See page 44, Fig. 48 of the accompanying book  
Scale 1:50



0M 1 2 3 4 5

Plate 9b  
**SECTION Q-20 FACING NORTH**  
See page 38, Fig. 39 of the accompanying book  
Scale 1:50

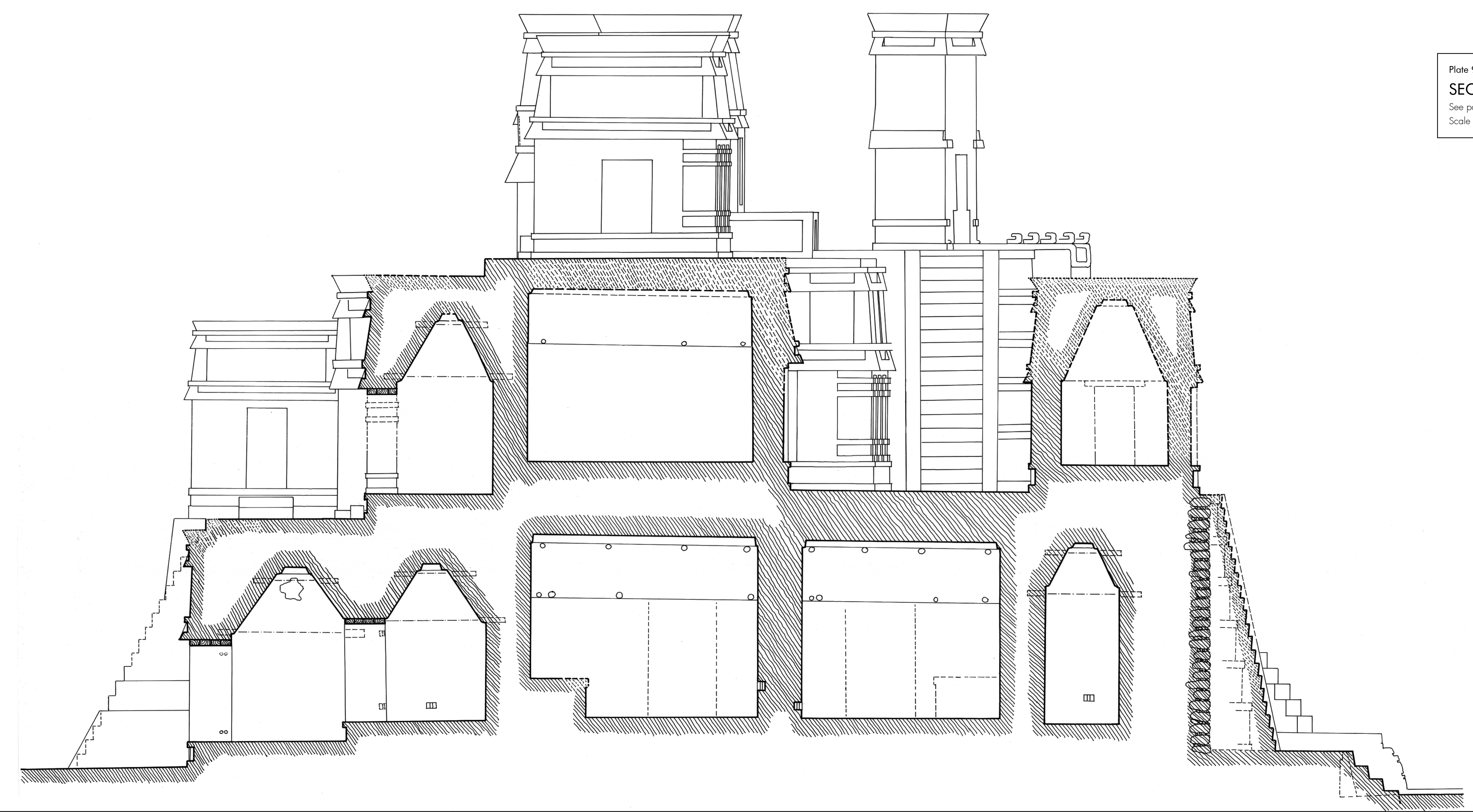
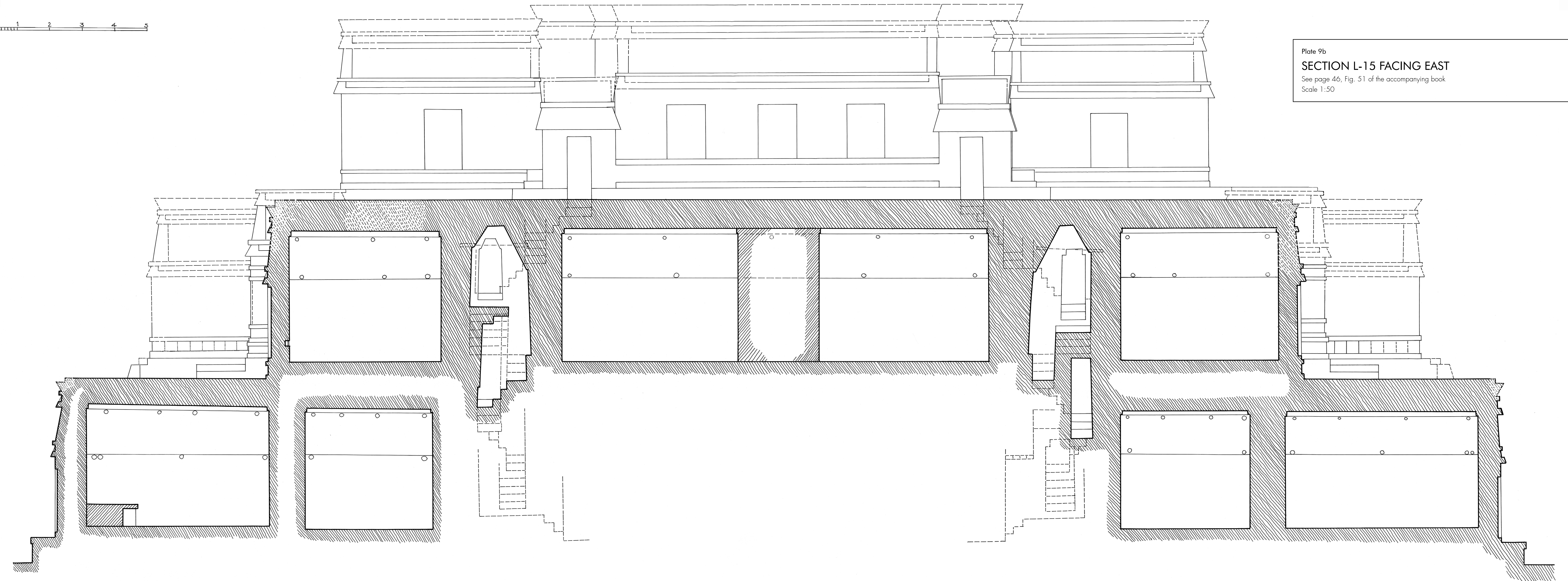


Plate 10a  
SECTION L-10 FACING EAST  
See page 46, Fig. 50 of the accompanying book  
Scale 1:50



0M 1 2 3 4 5

Plate 9b  
SECTION L-15 FACING EAST  
See page 46, Fig. 51 of the accompanying book  
Scale 1:50



THE MAYA TEMPLE-PALACE OF SANTA ROSA XTAMPAK  
©Vielog der Technischen Universität Graz 2017  
©Academic Publishers Graz 2017  
LARGE SIZE MAPS AND PLANS  
©Franz Holzmair  
Plate 11a  
SOUTHERN FAÇADE  
See page 36, Fig. 36 of the accompanying book  
Scale 1:50



Plate 11b  
SECTION Q-10 FACING NORTH  
See page 37, Fig. 37 of the accompanying book  
Scale 1:50

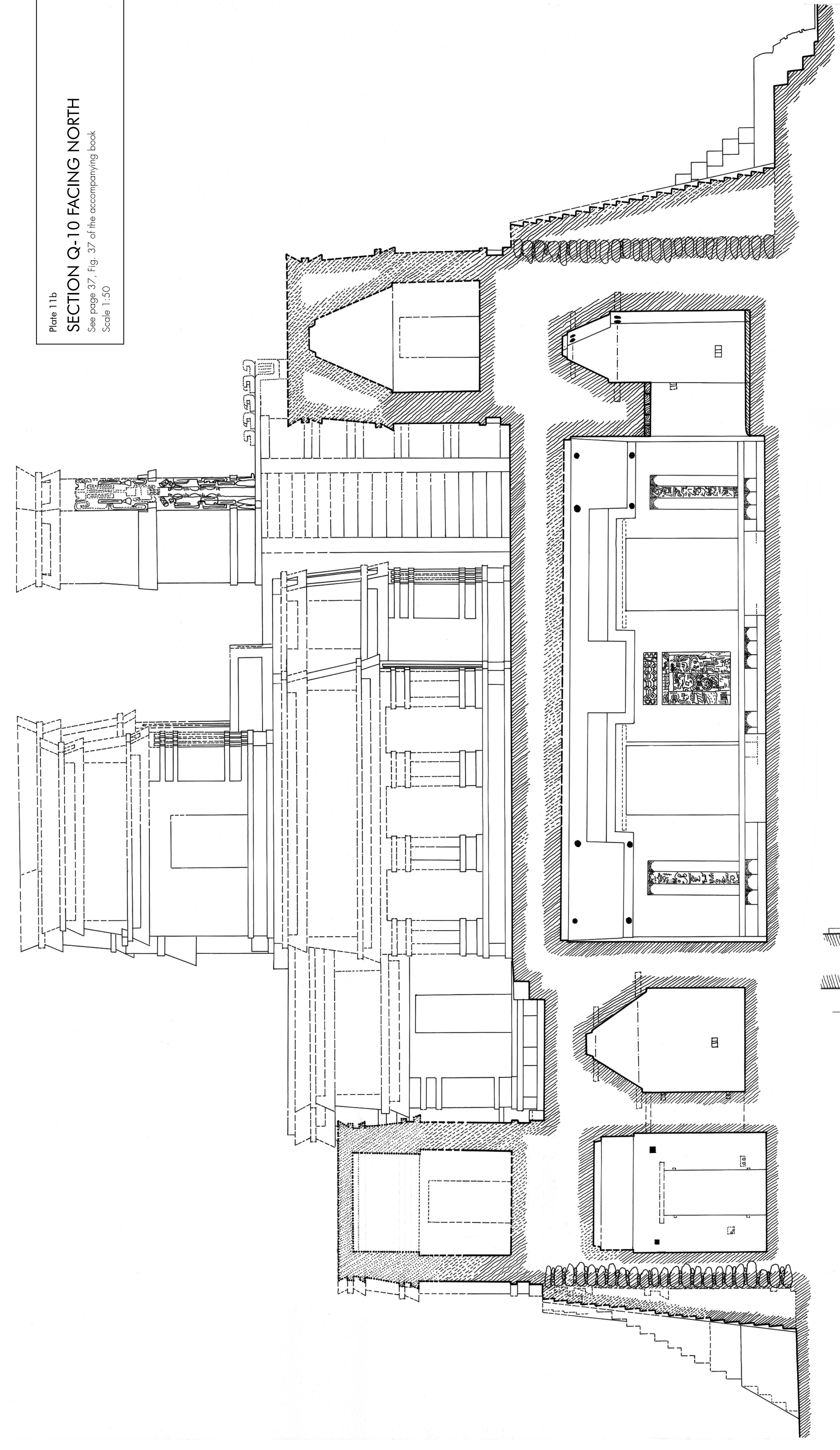


Plate 11c  
SECTION Q-45 FACING NORTH  
See page 41, Fig. 43 of the accompanying book  
Scale 1:50

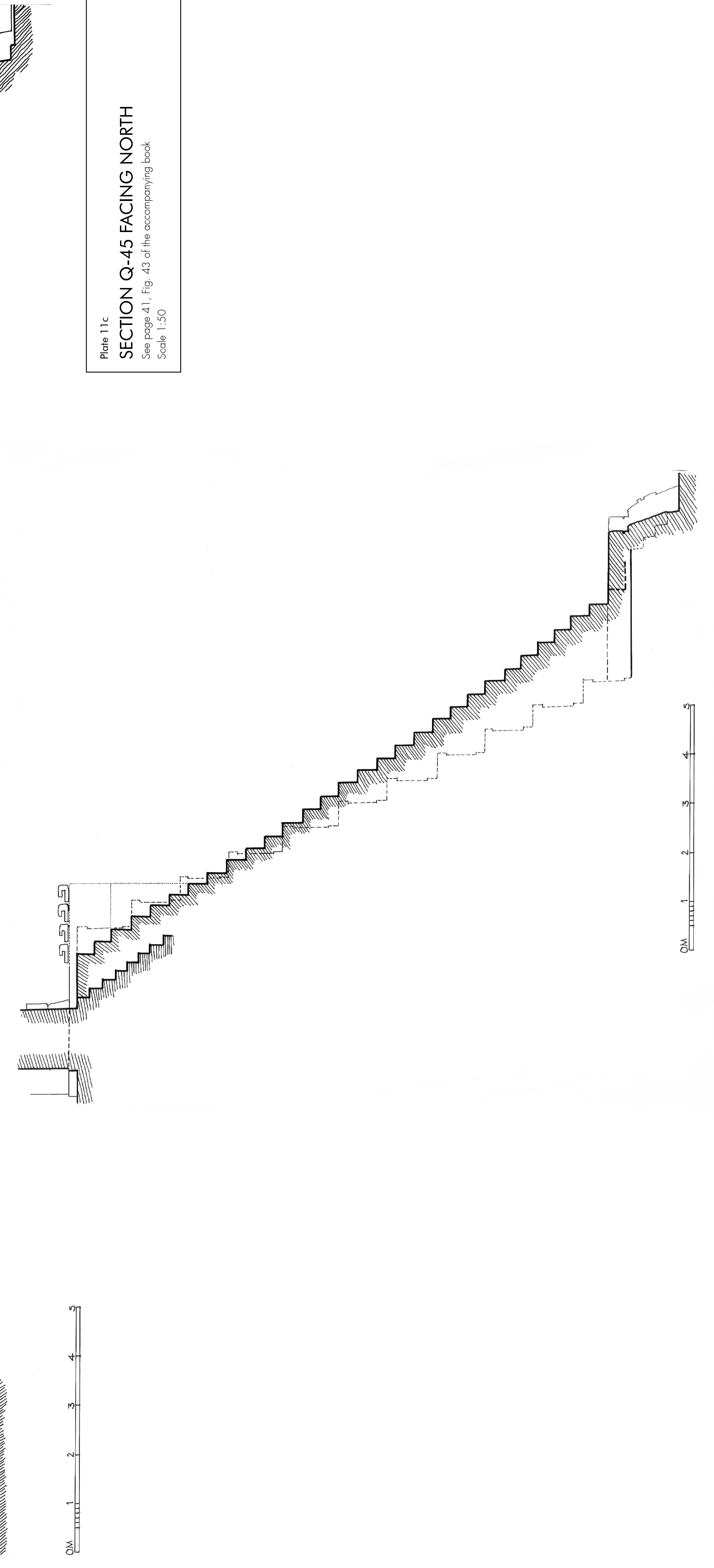


Plate 12a  
SECTION Q-35 FACING NORTH  
See page 40, Fig. 42 of the accompanying book  
Scale 1:50

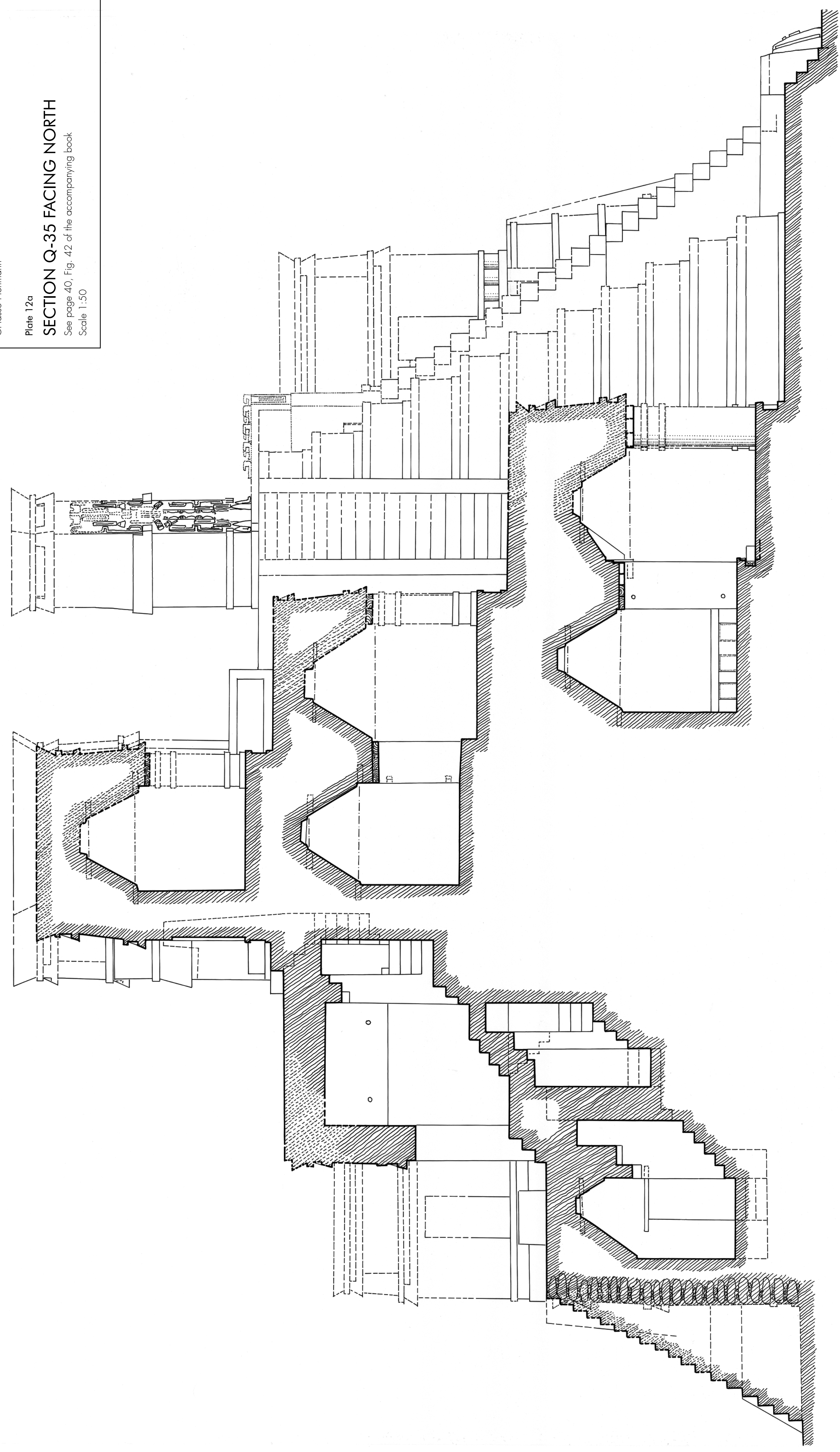
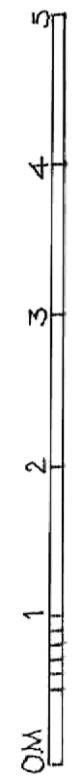
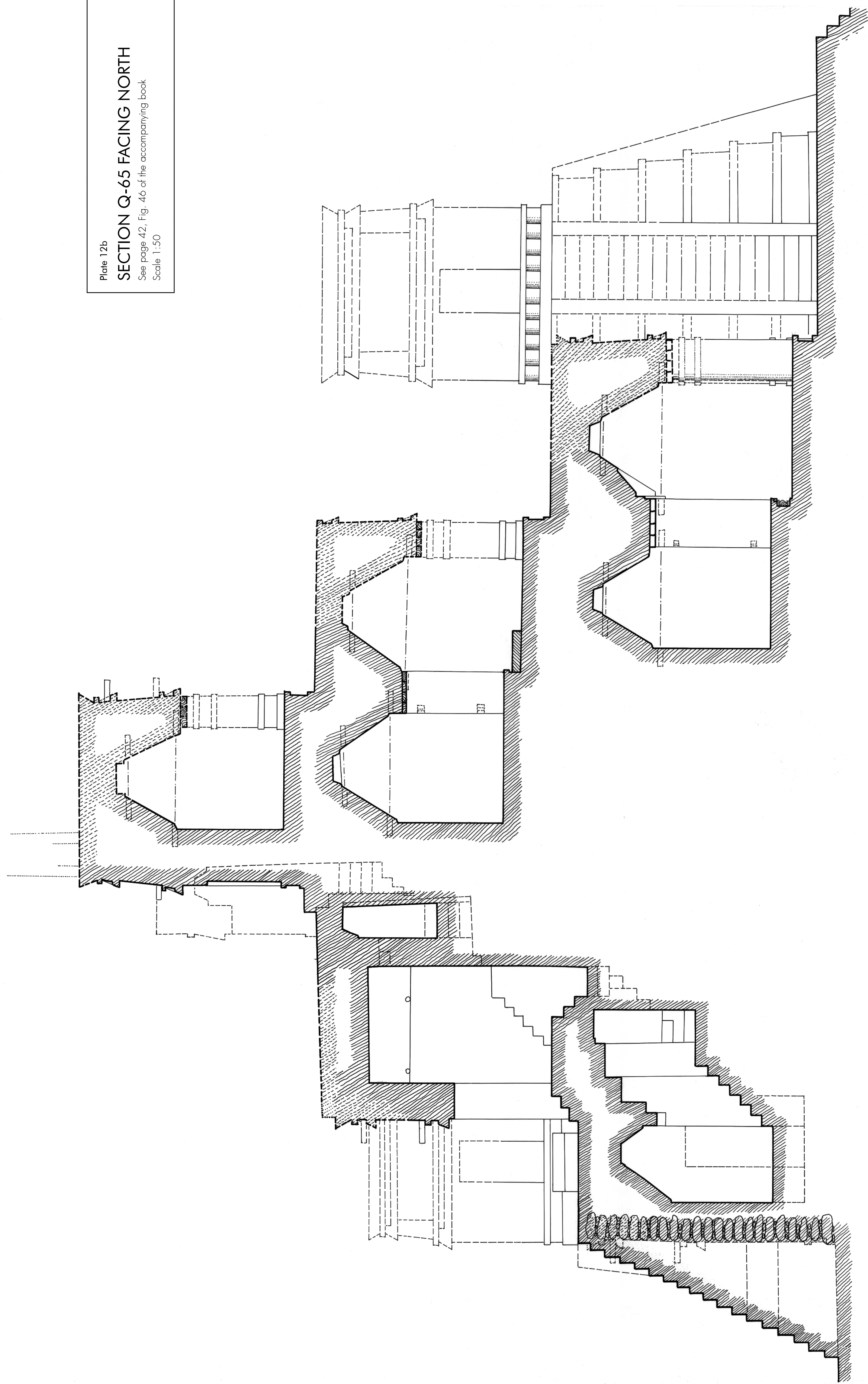


Plate 12b  
SECTION Q-65 FACING NORTH  
See page 42, Fig. 46 of the accompanying book  
Scale 1:50



THE MAYA TEMPLE-PALACE OF SANTA ROSA XTAMPAK  
©Verlag der Technischen Universität Graz 2017  
©Academic Publishers Graz 2017  
LARGE SIZE MAPS AND PLANS  
©Hasso Hoffmann  
Plate 13a  
SECTION Q-85 FACING NORTH  
See page 43, Fig. 47 of the accompanying book  
Scale 1:50

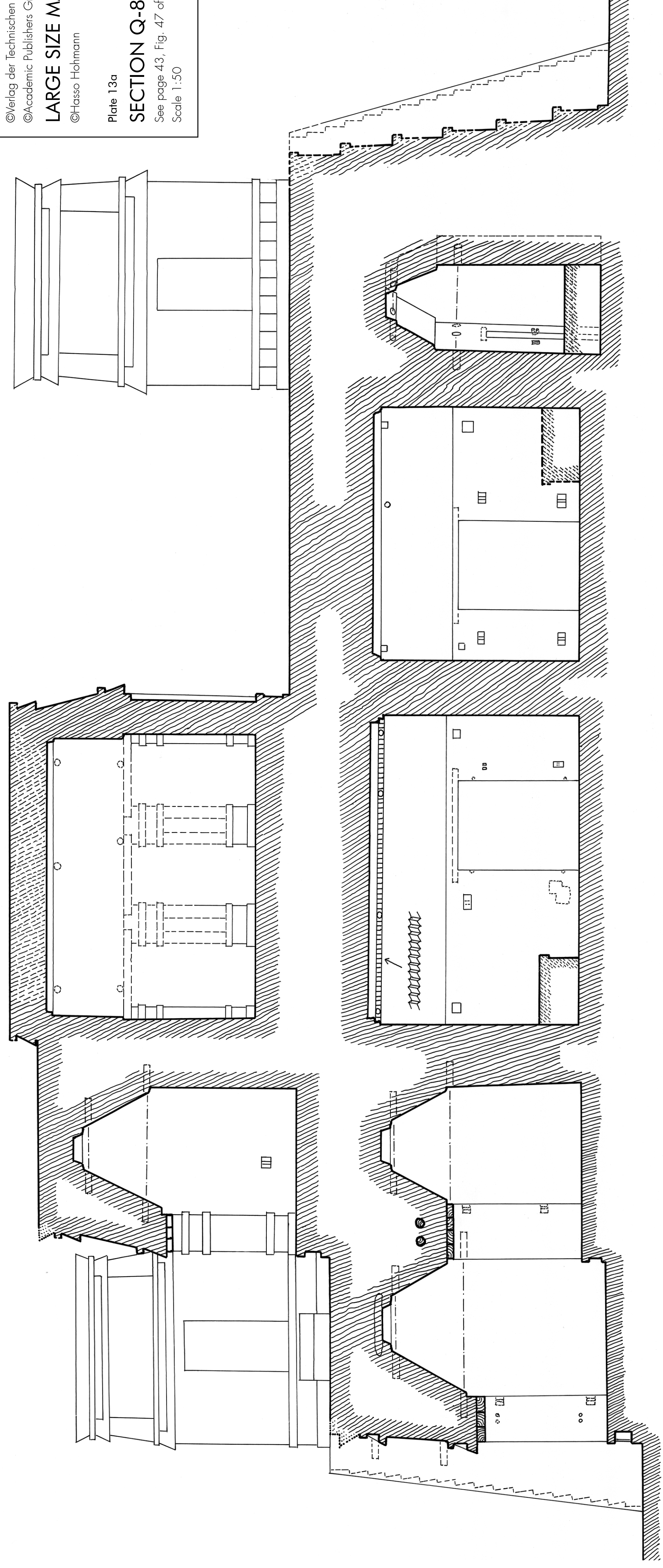


Plate 13b  
NORTHERN FAÇADE  
See page 50, Fig. 59 of the accompanying book  
Scale 1:50

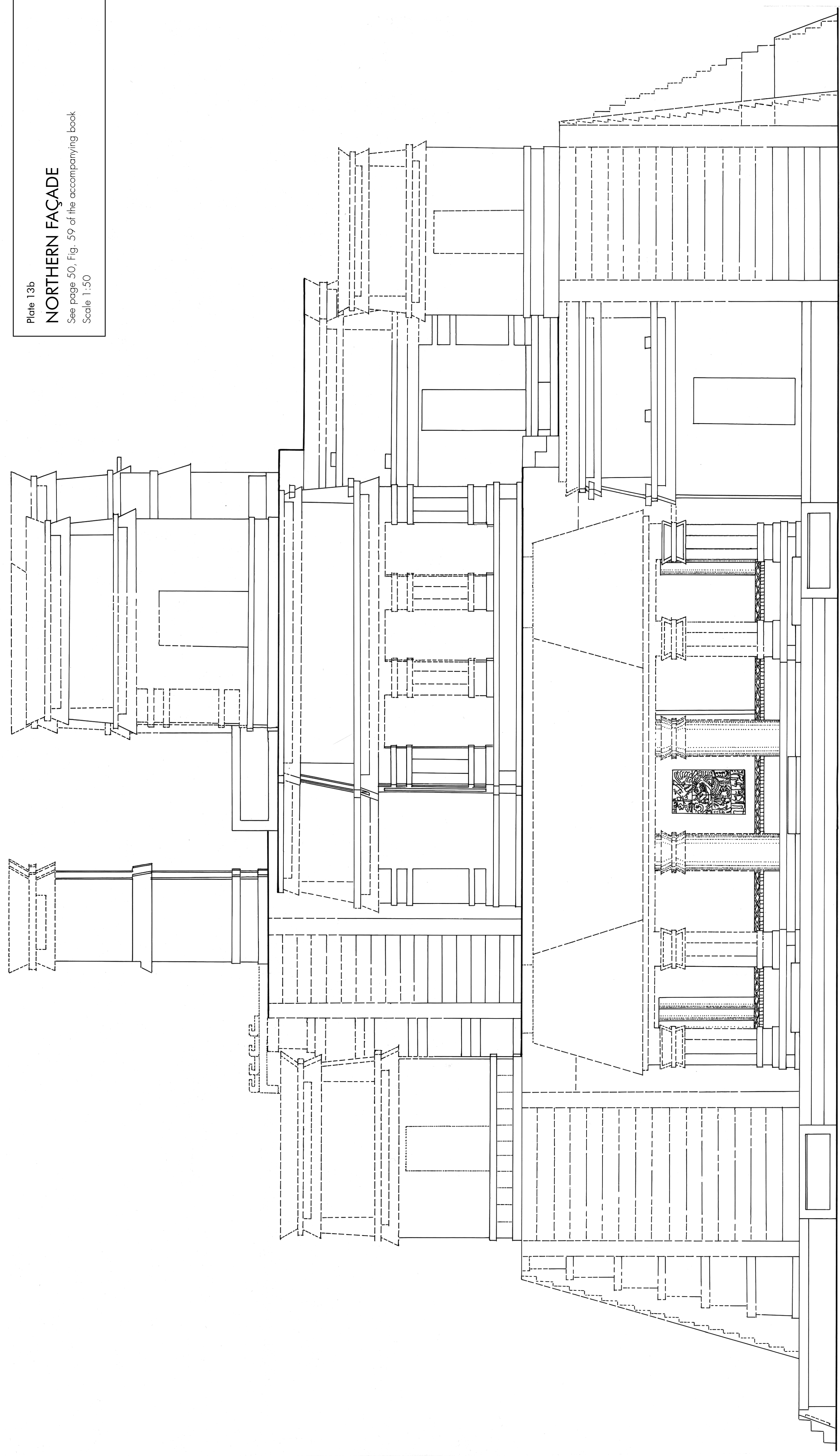


Plate 13c  
SECTION Q-90 FACING SOUTH  
See page 51, Fig. 61 of the accompanying book  
Scale 1:50

